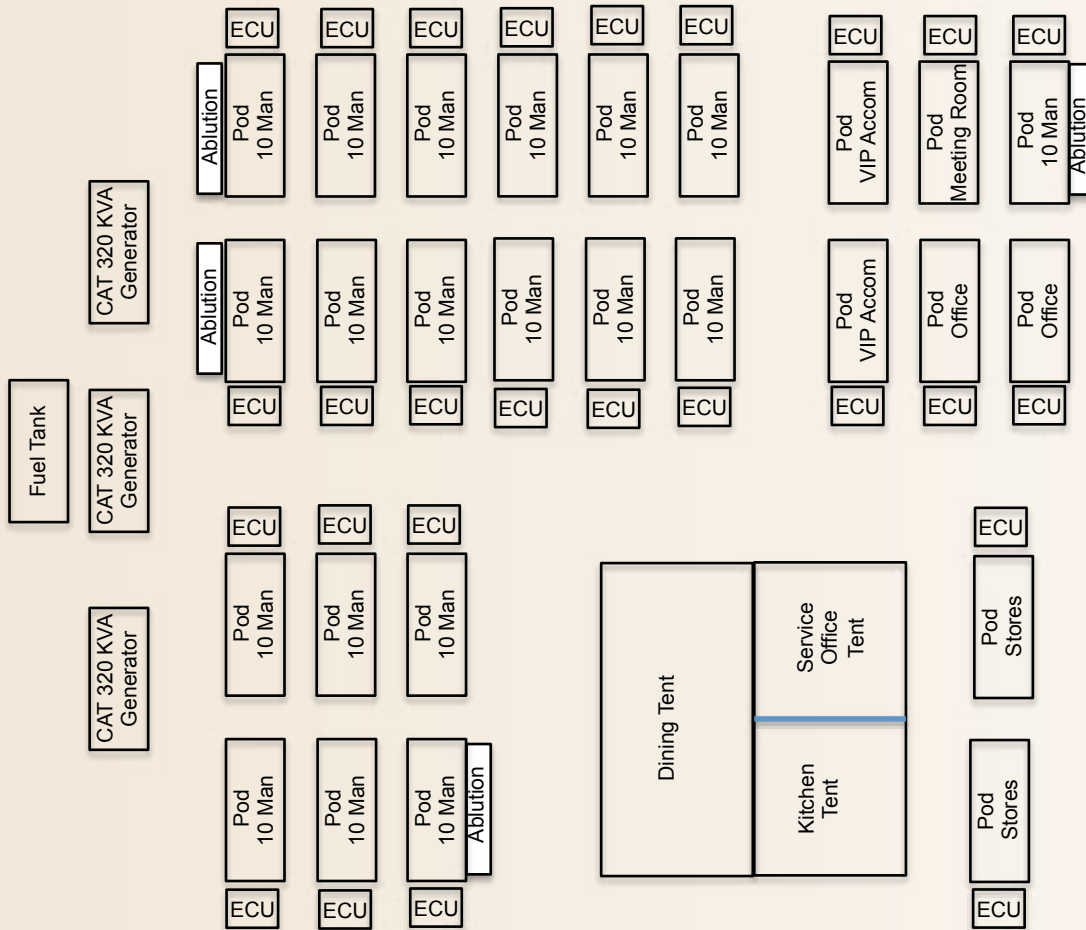


DEPLOYABLE ACCOMMODATION



Camp Layout



Details

26 Size A Tents (WxLxH= 20x26x10ft)

15 Accommodation
4 Ablutions
2 VIP Accommodation
2 Office
1 Meeting Room
2 Stores

2 Size D Tents (WxLxH= 20x91x15ft)

1 Dining
1 Kitchen

Power

3 Caterpillar 320 KVA Generators
1 Fuel Tank
26 ECU's (Environmental Control Units)
1 LGRU's
4 GRU's
9 LDU's
9 UCU's

2 Laundry Units

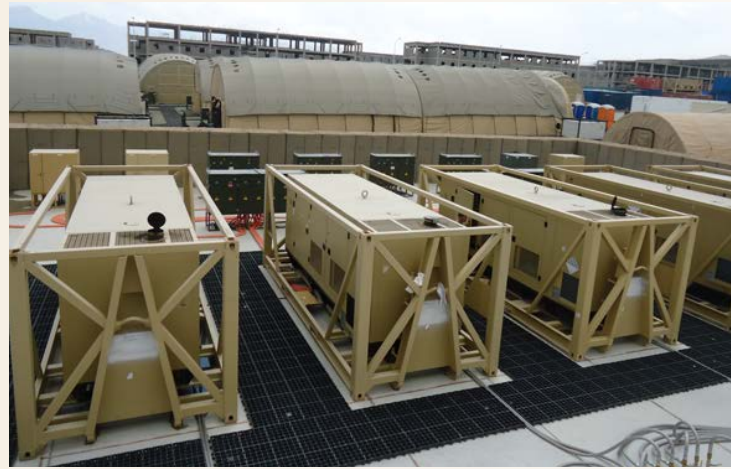
Camp Structure



Details

The deployable camp consists of 2 large pods and 26 smaller pods. This system offers ultimate flexibility allowing the tented accommodation to be configured to meet the needs of the customers. The deployed camp is easily erected and comes complete with assembly instructions; all pods are brand new.

Power Generation and Distribution



Details

Three Caterpillar 320KVA generators are included within the camp package, along with all power distribution units necessary to provide power throughout the camp. These are fed from a 20,000 litre fuel tank complete with all the ancillaries required to maintain supply of fuel. Whilst the camp can be easily run from 2 generators, the third allows planned maintenance, ensure uninterrupted supply and provides the power to allow to expansion.

Ablutions and Laundry



Details

Each laundry unit can be connected to the camp power supply or can run in isolation with its own built in 40 KVA generator. This flexibility enables independence or integration as required

Each ablution unit, which is designed to fit into one of the smaller pods, comes complete with wash basins, showers and toilets. The integrated hot water supply gives options for co-location or separation as necessary.

Spares and Additional Equipment

Details

Many spares have been incorporated into the package to facilitate flexibility and sustainment once deployed. Included extra are 10 small pods for use as replacements or for expansion as well as an additional ablution unit and additional power distribution boxes.



Transportation

Details

The complete camp is located within Camp Bastion, Afghanistan and comprises of 26 TEU's (20ft plated containers) ready for transportation either by Sea, Land or Air. Help and advice can be given on moving the camp to any destination worldwide.



For further details please contact Andy Eccles (Sales Director)
Agility Project Logistics Ltd | Bastion Disposal Project | Camp Bastion | BFPO 792
Mob: 0093 (0) 796663340 (Afghanistan) | Mob: 0044 (0) 7885667441
aeccles@agility.com | www.agilitylogistics.com



The quality of these camps is exceptional. This package is made from new equipment acquired to maintain the existing British military camps within Afghanistan. It is testament to the quality of these camps, that this equipment was never needed even through the extreme and harsh rigors of the Afghanistan environment.

For further details please contact Andy Eccles (Sales Director)
Agility Project Logistics Ltd | Bastion Disposal Project | Camp Bastion | BFPO 792
Mob: 0093 (0) 796663340 (Afganistan) | Mob: 0044 (0) 7885667441
aeccles@agility.com | www.agilitylogistics.com